

**I**

# Student Affairs



# Vice Chancellor for Student Affairs

Administrative Assistant

Director of Assessment and Planning

Chief of Staff

Director of Human Resources

Director of Advancement

Director of Budget and Finance

## Associate Vice Chancellor for Student Success, Inclusion & Belonging

- Fraternity & Sorority Affairs
- Illinois Leadership Center
- Illinois Student Council and Spirit Initiatives
- Minority Student Affairs
- New and Transfer Student Programs
- Student Engagement Office
- Registered Student Organizations
  - Office of Volunteer Programs
  - Student Sustainability Committee
- Testing Center
- The Career Center
- Asian American Cultural Center
- Bruce D. Nesbitt African American Cultural Center
- Diversity & Social Justice Education
- Gender and Sexuality Resource Center
- International Education
- La Casa Cultural Latina
- Native American House
- Women's Resources Center

## Associate Vice Chancellor for Auxiliary, Health & Wellbeing

- Campus Recreation
- Counseling Center
- McKinley Health Center
- Illini Union
  - Illini Union Bookstore
  - Parent and Family Programs
- Parking\*
- State Farm Center\*\*
- Student Affairs Technology
- University Housing

## Associate Vice Chancellor/Dean of Students

- Emergency Dean
- Off-Campus Community Living
- Student Assistance Center
- Student Conflict Resolution
- Student Legal Services
- Basic Needs

\* Administrative oversight by the Office of the Chancellor

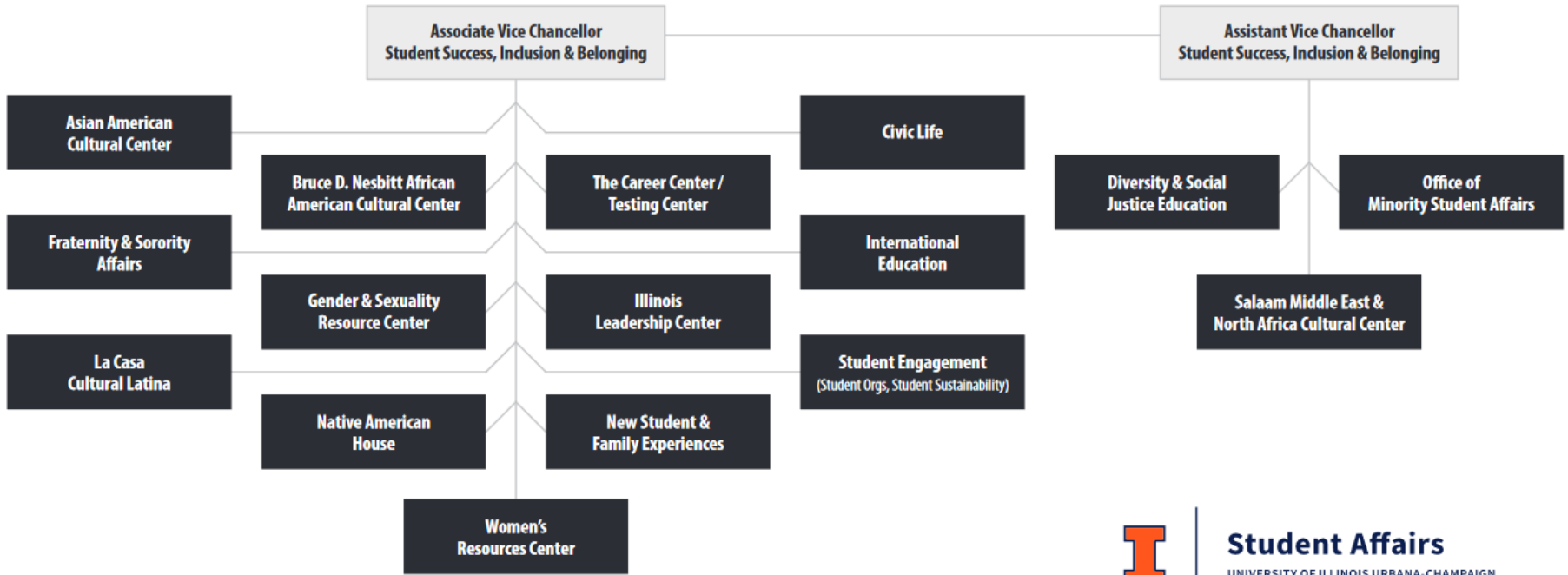
\*\* State Farm Center is co-managed by Student Affairs and the Division of Intercollegiate Athletics

**Student Affairs**



[studentaffairs.illinois.edu](http://studentaffairs.illinois.edu)

# Student Success, Inclusion & Belonging (SSIB)



\* Illinois Student Council Advising / Spirit & Traditions also reports to SSIB.



Updated September 13, 2023

# Student Success Centers



- Career Center/ Testing Center
- Civic Life
- Fraternity & Sorority Affairs
- Illinois Leadership Center
- New & Transfer Student Programs
- Office of Minority Student Affairs
- Student Engagement



# Resources Centers

- Diversity and Social Justice Education
- Gender & Sexuality Resource Center
- International Education
- Women's Resources Center



# Cultural Centers

- Asian American Cultural Center
- Bruce D. Nesbitt African American Cultural Center
- La Casa Cultural Latina
- Salaam Middle East & North African Cultural Center
- Native American House



# Auxiliary, Health and Wellbeing

- Department activities offer goods and services to faculty, staff and students and charge a fee directly related to the cost of the goods and services.
- Managed as self-supporting activities, with limited or no support from the university
- Funded through student fees, room & board, and self-generated revenue
- Convenient, user-friendly & cost-effective. Units operate as a business
- Most units manage their own facilities



# University Housing

- First year students are required to stay in residence halls
- Residence Halls: 9,200 beds
  - \$12,560 for air-conditioned double room + board
- Family and Graduate Housing: 1,120
  - \$760-\$960 (1 to 2 bedrooms)
- Provide dining and catering services
- 680 full-time and 2,000 student staff
- FY24 budget: \$133M





# Illini Union

- Community Center of the campus
- Average 2+ million visitors/year
- Lounges, meeting and conference spaces, dining, etc.
- Bookstore & Technology Store
- Over 140 full-time and 300 student employees
- FY24 budget: \$33.3M



# Campus Recreation

- Provides facilities and programs to engage the campus community in recreation and wellness opportunities
- Multi-purpose facilities, ice arena, soccer, baseball, basketball, group fitness, food assistance program, cooking classes, etc.
- 55 full-time staff and 850 student staff
- FY24 budget: \$16.8M



# McKinley Health Center

- Primary care and health education for students
- Close collaboration with Champaign –Urbana Public Health Dept. and local hospitals
- 75,000 to 100,000 visits per academic year
- 175 Full-time staff
- FY24 budget: \$23.1M



# Counseling Center

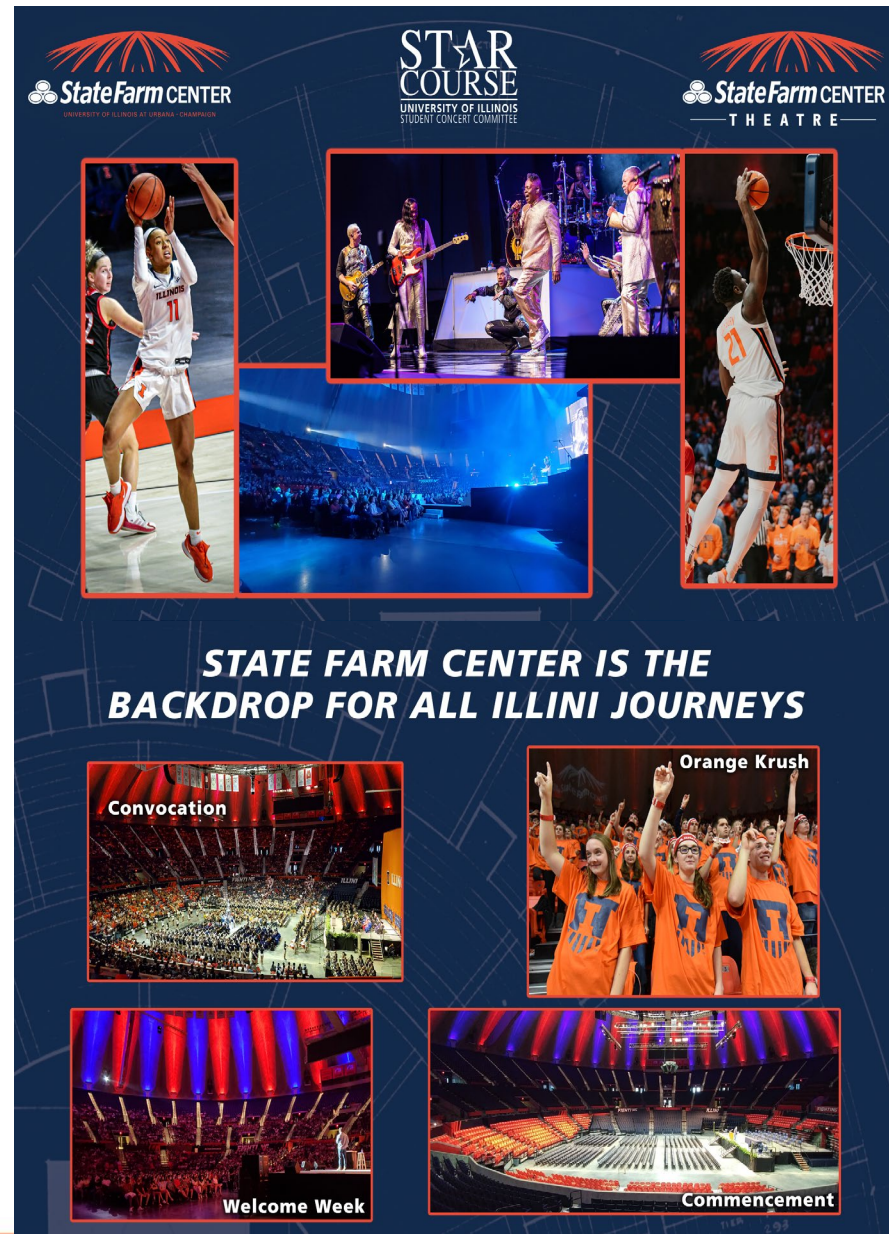


- Provides high quality services that address the psychological, educational, social, and developmental needs of students
- 51 full-time counselors plus administrative staff, and student staff.
- Embedded counselors in many colleges
- FY24 budget: \$5.2M

Clinical	Outreach	Training and Involvement
Time-Limited Individual Counseling	Workshops on Request	Counseling Center Paraprofessionals
Group Counseling		Harm Reduction Peers
Specialized Assessments	Psychoeducation	INNER VOICES Social Issues Theater

# State Farm Center

- Co-managed with Dept. of Intercollegiate Athletics
- Multi-purpose athletic facility (basketball, wrestling, monster trucks, large conferences, concerts, etc.)
- FY24 budget: \$19.7M



# Student Affairs Technology

- Shared technology service for Student Affairs units
- Share the costs of IT support in a fair and proportional manner across Student Affairs units
- 52 full-time employees plus student staff
- FY24 budget: \$3.7M



# Parking

- 15,635 parking spaces in 155 lots & 6 parking garages
- Approximately 11,000 parking permits between faculty, staff and students
- Cost of permit is based on faculty/staff salary and capped at \$762 for 2023-2024.
- Students pay \$143 to \$720 depending on the parking lot
- 20 full-time staff
- FY24 budget: \$9.5M



# Office of the Dean of Students (ODOS)

The Office of the Dean of Students implements a variety of programs and services to assist and support students in achieving academic and personal success. ODOS provides important educational and developmental opportunities, serves as student advocates, connects students with resources to help them meet essential needs, empowers students to be successful, and promotes students' rights and responsibilities.

**Mission:** The Office of the Dean of Students educates students through services, advocacy, and opportunities designed to maximize lifelong learning and success.

**Vision:** Our vision is for Illinois students to reach their full potential as ethical leaders and engaged citizens.

Services of the Office of the Dean of Students are funded 90% by a Service Fee charged each semester to students in on-campus programs. 10% is covered by State of Illinois dollars.





# The ODOS Portfolio

## *Fostering a Community of Care*

- Student Assistance Center
- Off-Campus Community Living
- Student Legal Services
- Office for Student Conflict Resolution
- Emergency Dean Program and Fund
- Basic Needs Center



# Student Assistance Center

The Student Assistance Center serves as the first point of contact for students who call, email, or walk in to the Office of the Dean of Students. Our Assistant Deans help students understand university policies and procedures, educate them about and connect them to campus and community resources, and support students in crisis.

Students visit us regarding a broad range of issues which may be impacting their academic performance including those related to health/mental health, course attendance issues, questions about where to go on campus and off to seek different services, options for withdrawing from the university, or because they need help and just aren't sure where to go. We help students find their way!

Drop-ins: Monday-Friday, 10am-3pm

Appointments: Monday-Friday, 8:30am-5:00pm

Contact Information:

Phone: (217) 333-0050

Email: [helpdean@Illinois.edu](mailto:helpdean@Illinois.edu)



# Off-Campus Community Living

Serves as a resource for students residing in privately owned housing. Services include:

- 1:1 appointments to review leases before students sign them; troubleshooting with landlord issues/concerns
- Providing educational materials and presentations in making the transition from on campus to off
- Building relationships with local landlords



Contact information:

Phone: (217) 333-0050

# Student Legal Services

Student Legal Services informs students of practical aspects of the law as applied to their individual problem. Attorneys may provide court representation in some cases.

Available services include:

- Housing/tenant issues (problems with landlord)
- Auto accidents/traffic tickets
- Misdemeanor charges
- City ordinance violations
- Certification of documents
- Consumer issues
- Small claims
- Power of attorney documents
- Name changes
- Notary services

Contact Information:

Phone: (217) 333-9053

Email:

[studentlegalservices@illinois.edu](mailto:studentlegalservices@illinois.edu)



# Office for Student Conflict Resolution

The Office for Student Conflict Resolution (OSCR) supports the community standards of the University of Illinois Urbana-Champaign by promoting ethical decision making, encouraging personal and social responsibility, and facilitating the effective resolution of conflict. Staff administer the [Student Code](#) (university's rules for students) by receiving and investigating reports of alleged violations and resolving them directly with students (informally or formally), or by referring them to a hearing panel of faculty, staff, and students.

OSCR's conflict resolution services include:

- Individual Conflict Coaching
- Facilitated Dialogue
- Mediation
- Shuttle Diplomacy
- Restorative Justice

Contact Information:

Phone: (217) 333-3680

Email: [conflictresolution@Illinois.edu](mailto:conflictresolution@Illinois.edu)



# Emergency Dean Program & Emergency Dean Fund

One of the resources the University makes available to students is the support and guidance of a University administrator who is on call and can be reached when University offices are closed. The **Emergency Dean** supports students who are experiencing health or safety emergency situations **in which an immediate University response is needed and which cannot wait until the next business day**. The Emergency Dean is not a substitute for trained emergency personnel such as 911, police, or fire professionals.

The **Emergency Dean Fund** is made possible by generous donations and offers very limited financial assistance to enrolled, degree-seeking students. The fund is available to provide one-time financial assistance per academic year to students who are unable to meet immediate, essential expenses because of a temporary hardship related to an emergency, such as an accident, illness, natural disaster, recent job loss, or other unforeseen circumstance.



# Expressive Activity on Campus

- Our Campus Administrative Manual has a policy on [Expressive Activity on Campus](#)
- As a public institution, our students retain their Constitutional rights
- As a public institution, demonstrations and protests are expressions of free speech, with the university's ability to restrict them very narrowly tailored.
- Faculty have the right of academic freedom to teach their classes as they generally deem appropriate

# Thank you!



**Jim Hintz**

Associate Vice  
Chancellor for Student  
Success, Inclusion, &  
Belonging  
[hintzj@illinois.edu](mailto:hintzj@illinois.edu)



**Lowa Mwilambwe**

Associate Vice  
Chancellor for Auxiliary,  
Health and Wellbeing  
[lmwilamb@illinois.edu](mailto:lmwilamb@illinois.edu)



**Stephen Bryan**

Associate Vice Chancellor  
for Student Advocacy and  
Dean of Students  
[spbryan@illinois.edu](mailto:spbryan@illinois.edu)



**Student Affairs**

 [studentaffairs.illinois.edu](https://studentaffairs.illinois.edu)